



Innovative Information Management

Producing documentation for Eclipse RCP applications

**Alexej Spas,
instinctools GmbH
June 04, 2009**

Agenda

- Issue of RCP Product Documentation
 - Challenges
 - Possible solution
- DITAworks overview
- Extended Eclipse help support
- Q & A

Issue of RCP Product Documentation

SW Product Documentation Business Case

As any software product, RCP application requires certain set of typical documentation deliverables:

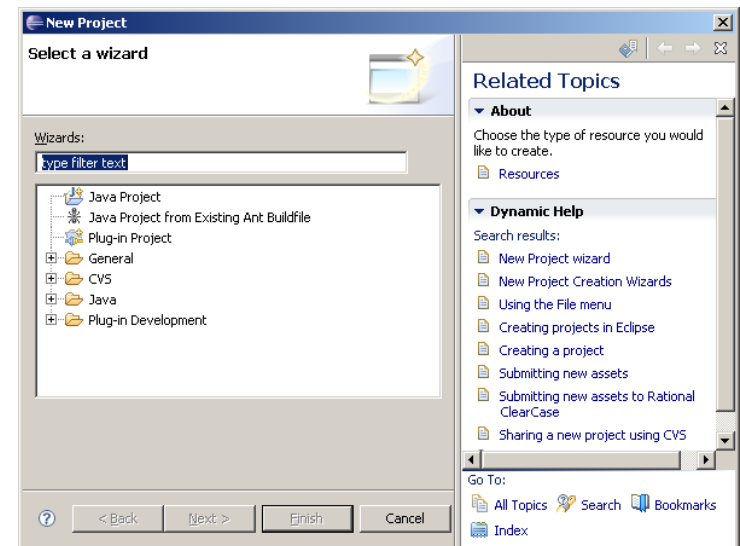
- ✓ Printed documentation materials (manuals, references etc.)
- ✓ Application help
- ✓ Context sensitive help
- ✓ Some documentation materials should be published online (Online help)
- ✓ Training materials
- ✓ ... other documents

Most of these documents have quite a high potential for partial content reuse.

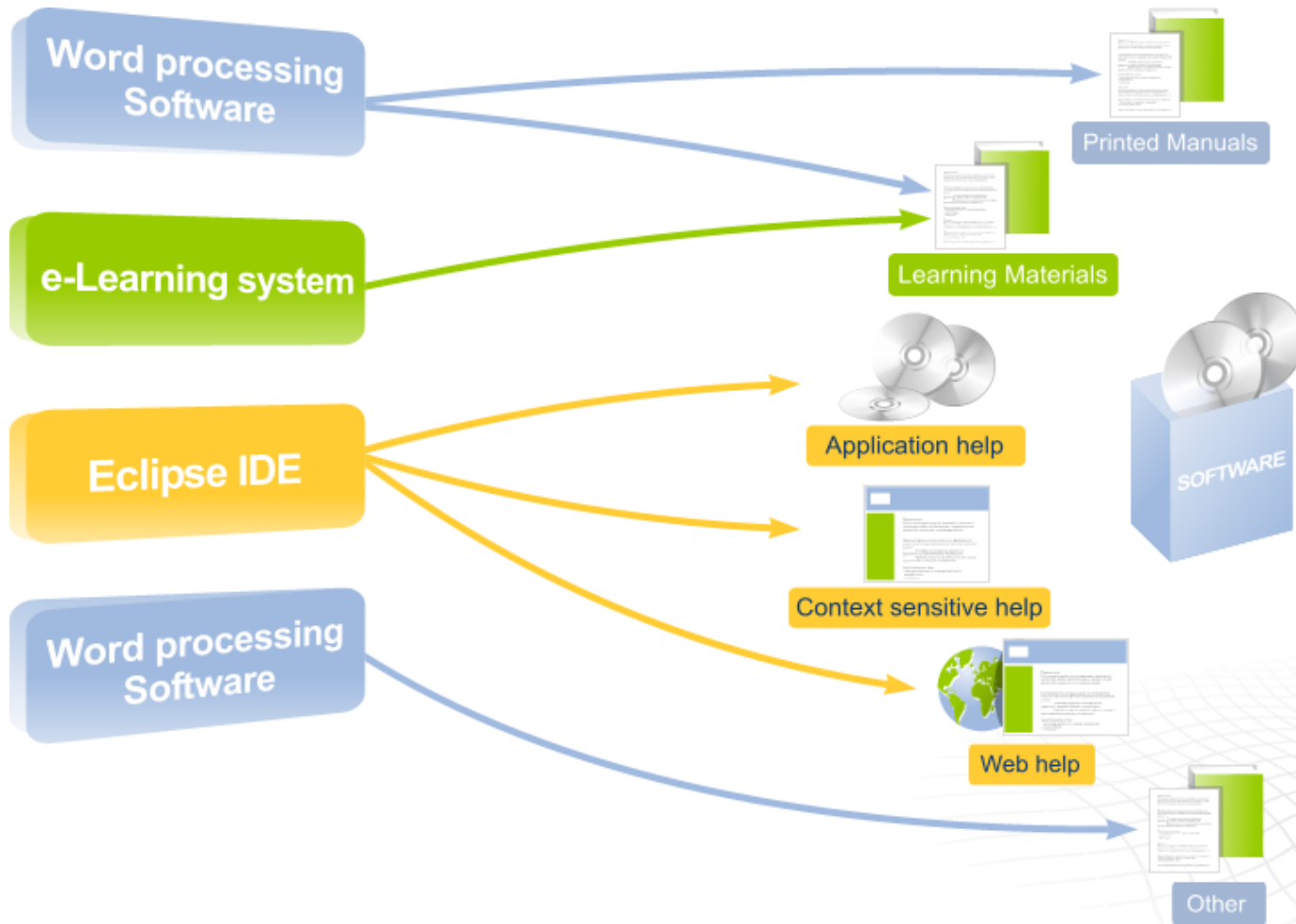
What can Eclipse Offer in this Area?

Eclipse Help Subsystem: Set of Eclipse plug-ins that provide functionality of embedded application help in RCP applications

- ✓ Eclipse help can be used for:
 - ✓ Application help
 - ✓ Context sensitive help
 - ✓ Web/Online help (when running EH in Infocenter mode)
- ✓ Eclipse help format is based on an XML table of contents referencing HTML files.
- ✓ Eclipse IDE includes a set of plug-ins enabling authoring operations.



Traditional Documentation Toolset



Challenges we are Facing in this Scenario are:

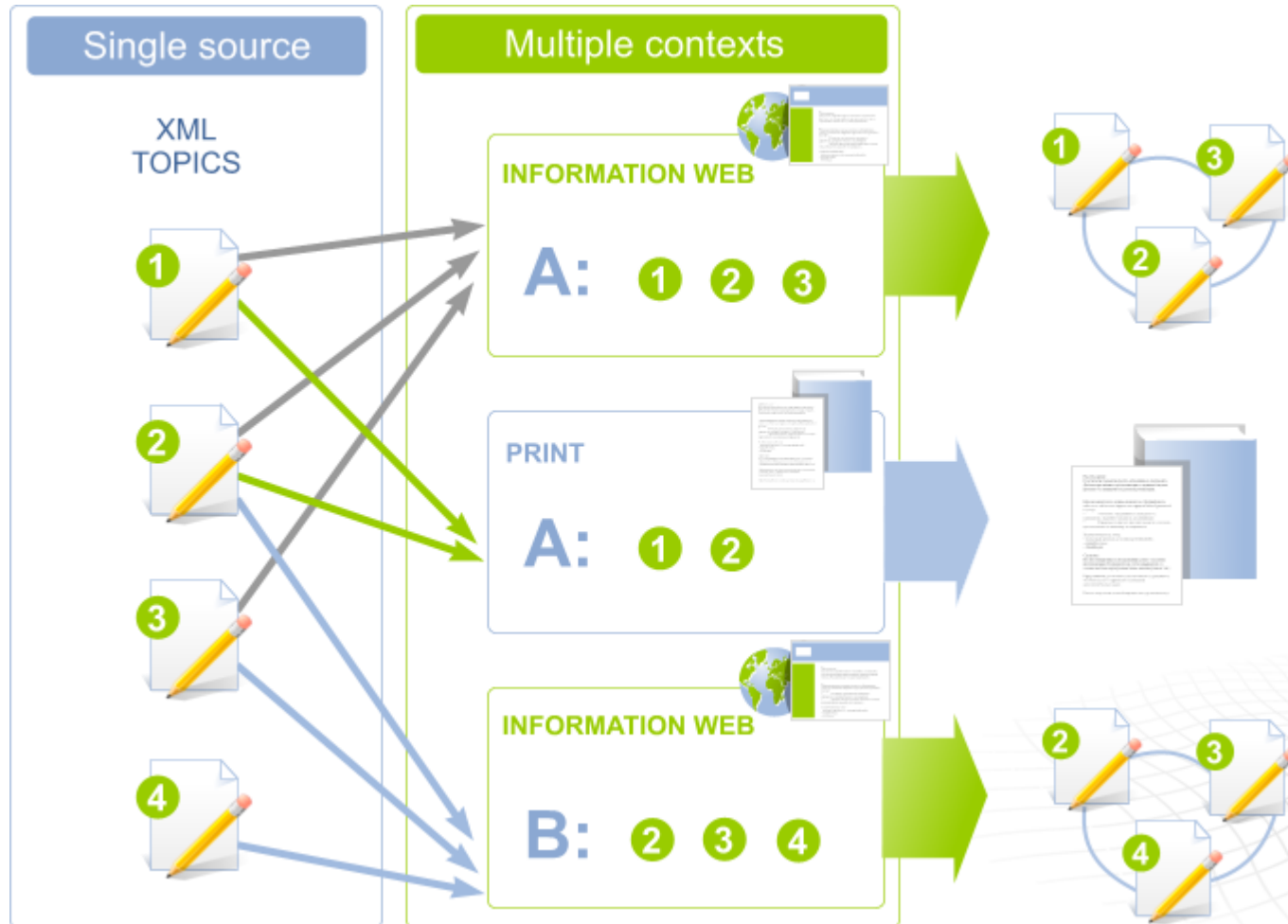
- ✓ Managing different source formats and redundant content
- ✓ Increasing Complexity of Documentation
- ✓ Globalization & Localization
- ✓ Increased Competition and Shortening of Development Cycles
- ✓ High Quality Expectations
- ✓ Different Target Media
- ✓ Need of Integration
- ✓ Increasing Demand for Documentation Variants

Conclusion: Without **consistent documentation methodology** and appropriate **tool support**, there is very less chance to manage all required deliverables efficiently

Possible Solution I

- ✓ As an answer to these challenges, the concept of **single source publishing** appeared.
- ✓ *Single sourcing allows:*
 - ✓ **same content** to be used in **different documents** or in **various formats**.
 - ✓ *labor-intensive and expensive work of editing only to be carried out **once, on one source document**.*
 - ✓ further **transformations to be performed mechanically**, by automated tools.
- ✓ One of the leading standards in XML single sourcing is **DITA**:
 - ✓ DITA stands for **Darwin Information Typing Architecture**
 - ✓ DITA was developed by IBM and donated to OASIS
 - ✓ DITA divides content into small, self-contained topics
 - ✓ DITA Topics can be reused in different deliverables.
 - ✓ Deliverables are modeled using special structure called **map**.

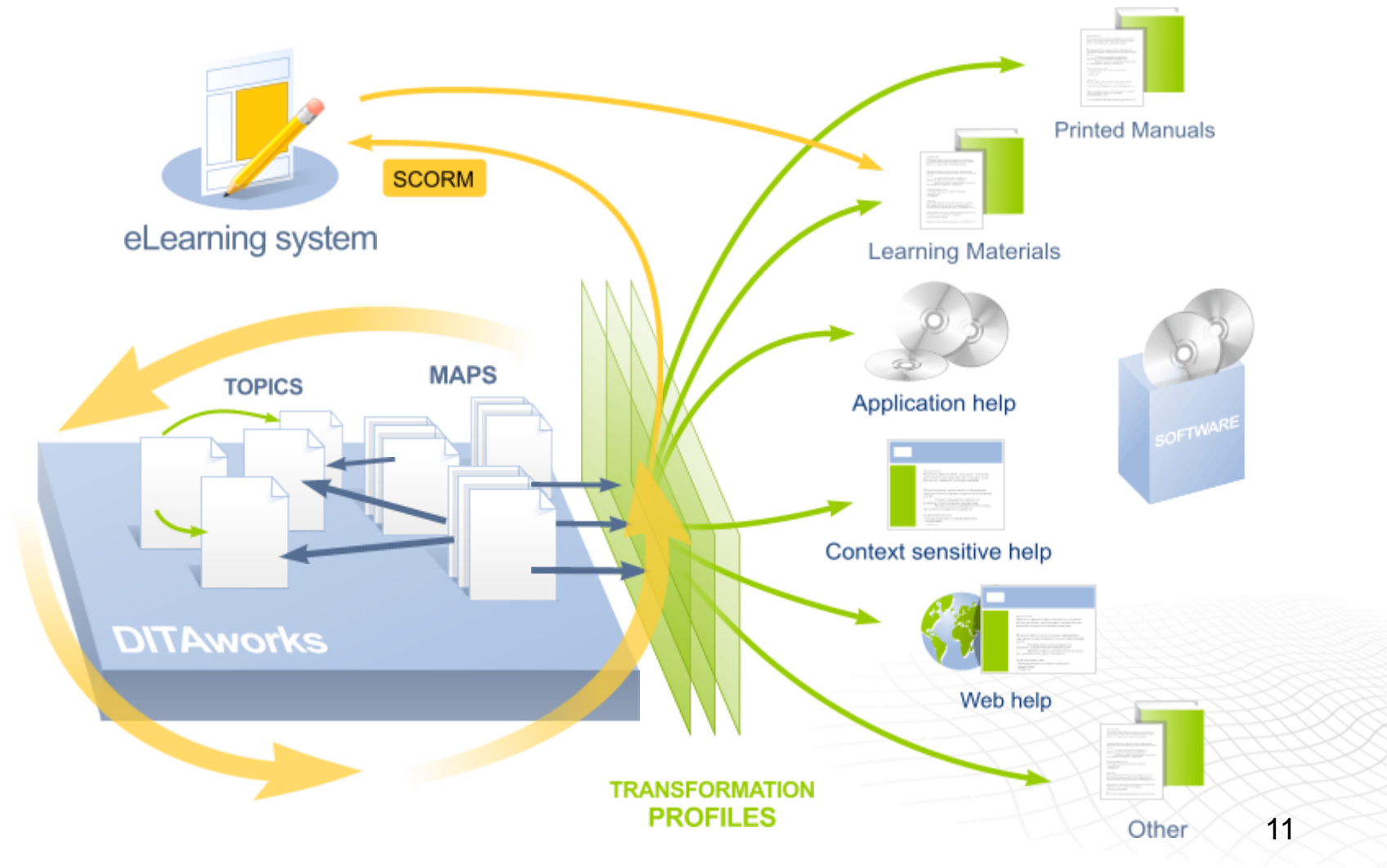
DITA Publication



Possible Solution II

- ✓ DITA is a very powerful information architecture but to make use of it efficiently, a content management tool is needed.
- ✓ *And that's where DITAworks comes into play:*
 - ✓ DITAworks is an Eclipse based **documentation management solution**.
 - ✓ It is designed **around DITA architecture** and follows Single source principle.
 - ✓ It provides integrated tooling for **modeling, creation, administration** and **publishing** of complex documentation.
 - ✓ DITAworks brings **best practices of SW development** into documentation development domain

DITAworks Toolset



Advantages of DITAworks in This Scenario

- ✓ **Single-source publishing** approach
- ✓ Comfortable **WYSIWYG editing**
- ✓ Generate **different formats** from single source
- ✓ **Minimize efforts** spent on managing documentation **variants**
- ✓ Increase **content reuse** and minimize amount of managed content
- ✓ Minimize **translation costs**
- ✓ **Increase quality** and consistency of documentation
- ✓ **Automatically build** product documentation as part of product build process
- ✓ Content can be **pulled from** 3rd party systems
- ✓ Content can be **published to** 3rd systems

DITAworks Overview

DITAworks Use Cases

Single-source publishing

- ✓ Management of User Manuals
- ✓ Management of Technical and product documentation
- ✓ Context sensitive help and online help
- ✓ Training and e-Learning materials

Structured document generation & management

- ✓ Contracts, Reports
- ✓ RFO, RFT and other structured documents
- ✓ Include data from external data sources (DBs, management systems and s.o.)

Supported output formats: XHTML, PDF, RTF, EclipseHelp, JavaHelp, troff, DocBook, SCORM*

DITAworks Product Core Areas



Modeling

Provides meta information for all DITAworks tooling and enables efficient use of specialization.

- **Import** of existing specializations from **DTD** and **XML Schema**
- **Export** of managed specializations to **DTD** and **XML Schema**
- **Visual editors** for DITA base model: Specialization editing
- **Model validations**
- **Extended model:**
 - Settings for editorial tools
 - WYSIWYG Style sheets
 - Custom validation rules
 - Custom transformations
 - etc.
- **Model refactoring**



Documentation Process

Provides a set of integrated editorial model-driven tools for efficient content authoring.

- **Content Import**
- **Infrastructural project rules**
- **Visual editors** for DITA topics and maps
- **Link management**
- **Content validation**
- **Content refactoring** (e.g. rename, move, content extraction etc.)
- **Reuse block management**
- **Tag management**
- **Versioning**
- **Collaboration**

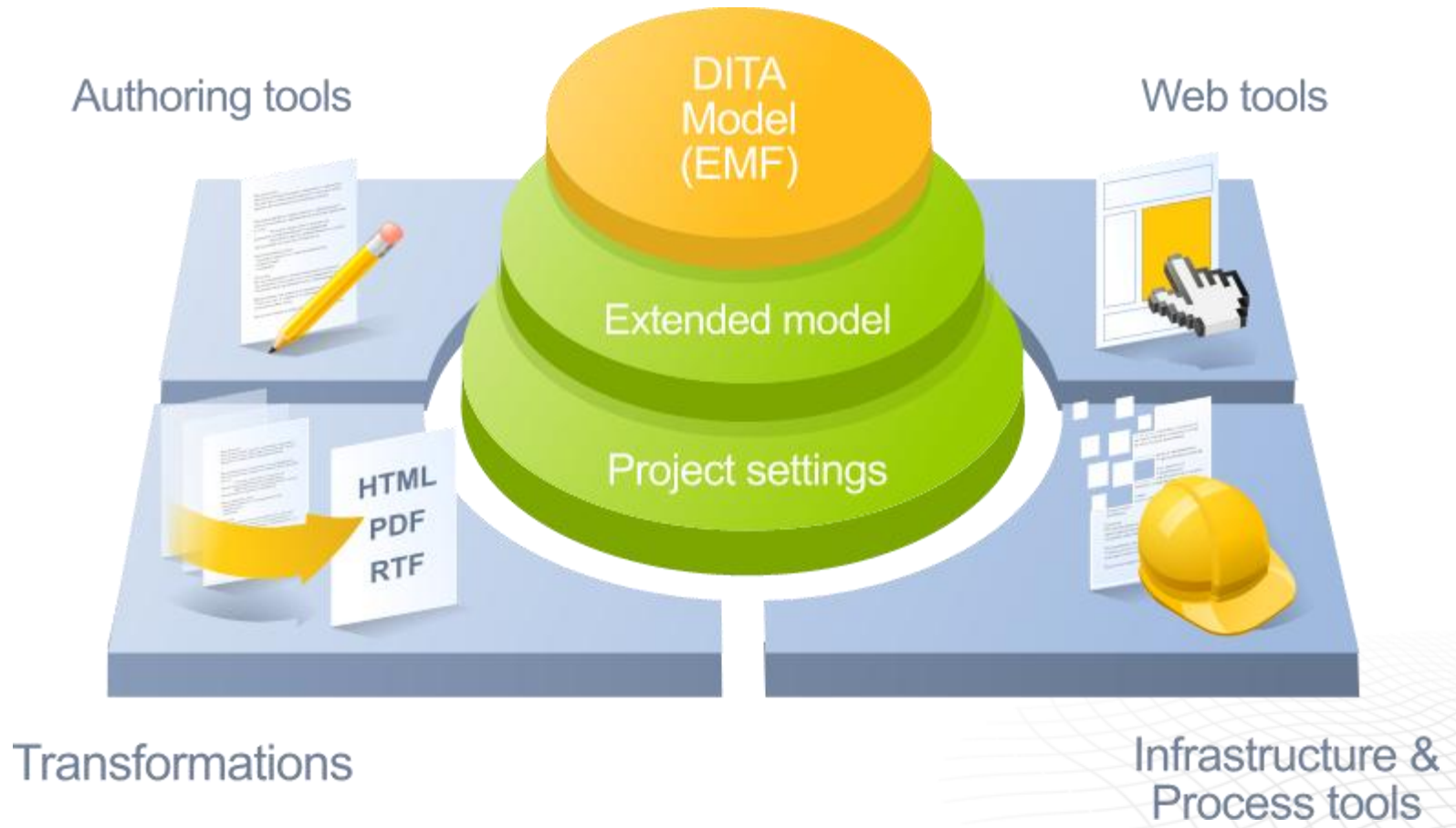


Publishing & Export

Provides means for delivery to end-user .

- **Integrated OT** with some important improvements.
- **Publishing configurations** including settings for variables, conditional processing etc.
- Extended support of **Eclipse help**
- **Export** of content (full or partial)
- **Publishing server** for running headless transformations.

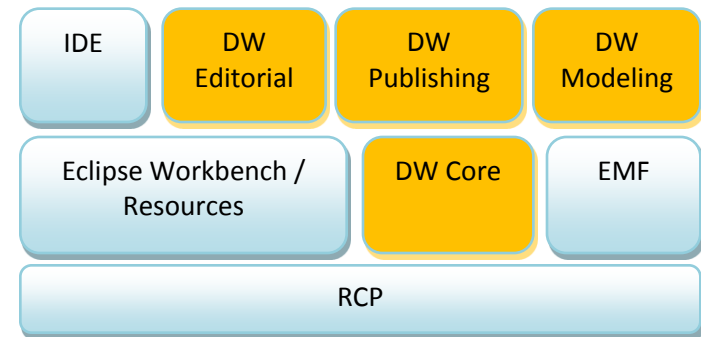
DITAworks Model-driven Architecture



DITAworks on Eclipse platform

Advantages:

- ✓ Easy integration with other Workspace-oriented tooling (e.g. SW development tools)
- ✓ Easy integration with other Eclipse projects and technologies
- ✓ Functional blocks can be used independently



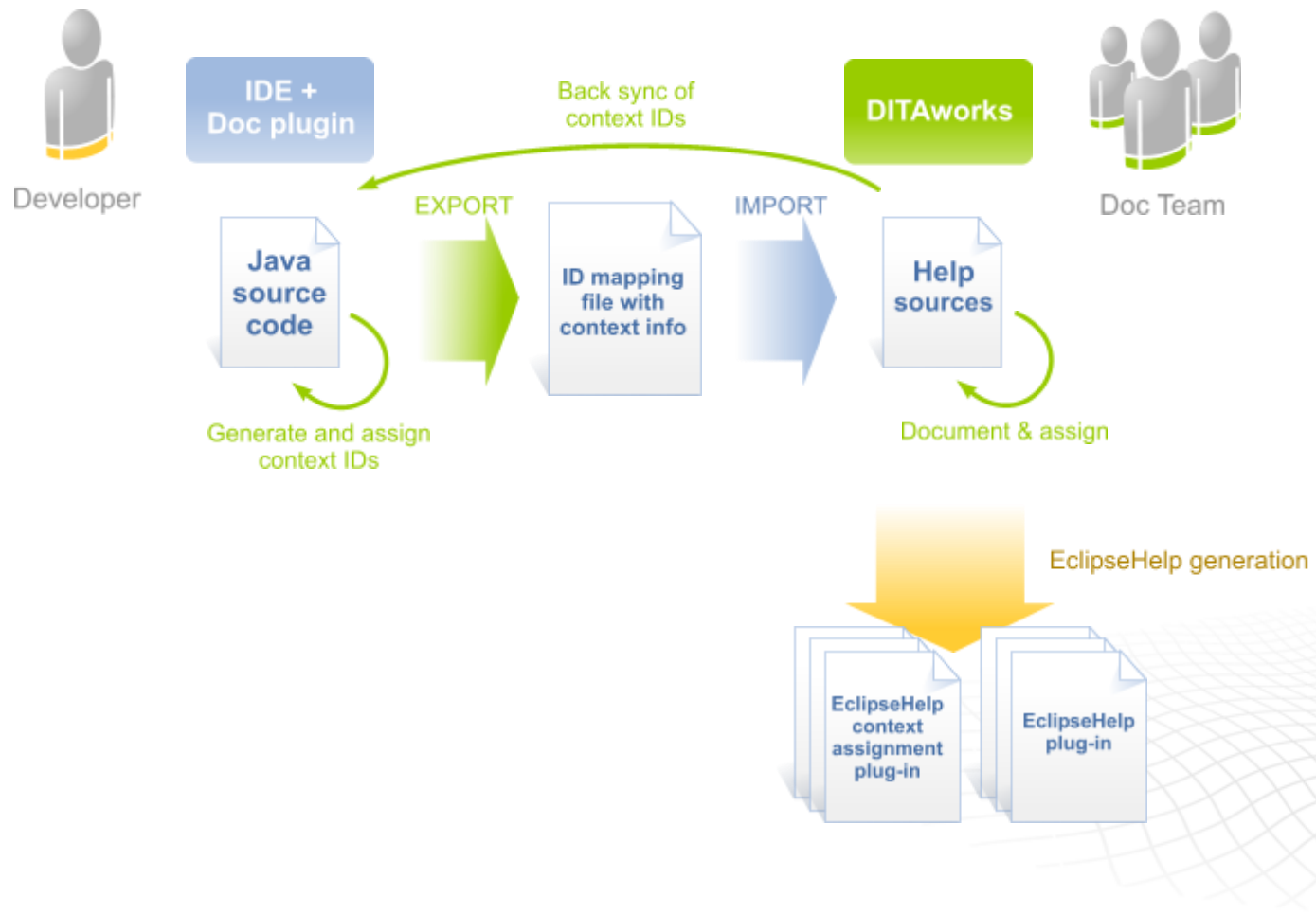
Extended Eclipse Help Support

Extended Eclipse Help support

Highlights:

- ✓ New specialized map for modeling Eclipse help **specifics** like **contexts, indexes, cheat sheets** etc.
- ✓ **Import** of existing Eclipse help plug-ins
- ✓ **Tools for integration with development process.** (Context IDs management between development and documentation teams)
 - ✓ Plug-in for Eclipse IDE
 - ✓ ID synchronization wizards
- ✓ Support of dynamic context ID mapping (DTP approach)
- ✓ Eclipse help specific validations

Eclipse Help Documentation Process

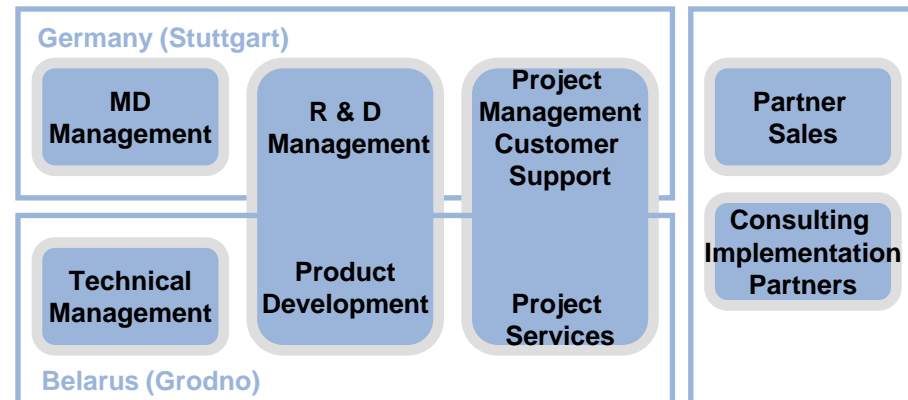


Summary

- ✓ DITAworks **addresses most of the challenges in the area of RCP application documentation** as a ready out-of-the-box product
- ✓ DITAworks **enables single-source approach** to the development of documentation under Eclipse
- ✓ DITAworks **can be easily integrated** with other Eclipse based tools
- ✓ DITAworks is also a **good starting point for custom solutions** dealing with structured document generation
- ✓ DITAworks pays special attention to **support of Eclipse help format**

About *instinctools

- *instinctools GmbH delivers Information Management solutions on Java technology since 2001, on Eclipse since 2007
 - Eclipse Application Design and Implementation Services
 - Eclipse Application Maintenance and Support
 - Tools for Technical Documentation (single source strategies)



- Management Team in Germany, Software Lab near shore (Belarus)
- Successfully serving premium customers like Daimler, Hubert Burda Media, Garant, EnBW and SMEs
- Proven management processes and reliable project delivery infrastructure
- Member of tekomp, Eclipse Foundation



Q & A

New Ideas in Information Management

Sophienstr. 17

D-70178 Stuttgart

phone: +49 (0) 711 - 99 33 85 90

fax: +49 (0) 711 - 99 33 85 99

e-mail: **info@instinctools.com**

internet: **www.instinctools.com**